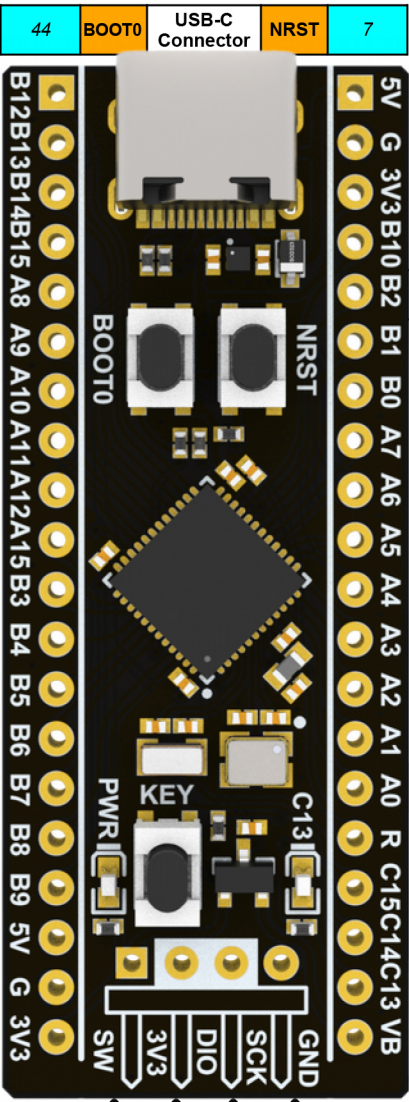


STM32F4x1Cx v2.0+

Pinout Diagram

Legend

POWER
GROUND
CPU PIN
PIN NAME
CONTROL
ANALOG
TIMER & CHANNEL
USART
SPI / I2S
SDIO (F411 Only)
I2C
CAN BUS
USB
MISC
BOARD HARDWARE
← 5V → Tolerant
← 3.3V → (F411)
~ PWM ~ Pin



EXT_SD2
RTC_50Hz RTC_REFIN
USB FS_SOF
USB/OTG FS_VBUS
USB FS_ID
USB FS_DM(-)
USB FS_DP(+)
JTDI
JTDO-SWO
JTRST

T1_BKIN	NSS2 NSS4	SCK3 (F411)	SMBA2	PB12	25
T1_CH1N	SCK2	SCK4 (F411)		PB13	26
T2_CH2N	MISO2	SD_D6		PB14	27
T1_CH3N	MOSI2	SD_CK		PB15	28
T1_CH1	SD_D1	CK1	SCL3	PA8	29
T1_CH2	SD_D2	TX1	SMBA3	PA9	30
T1_CH3	MOSI5 (F411)	RX1		PA10	31
T1_CH4	MISO4 (F411)	CTS1 TX6		PA11	32
T1_ETR	MISO5 (F411)	RTS1 RX6		PA12	33
T2_CH1 T2_ETR	NSS1 NSS3	TX1 (F411)	SDA2	PA15	38
T2_CH2	SCK1 SCK3	RX1 (F411)	SDA3	PB3	39
T3_CH1	MISO1 MISO3	SD_D0	SMBA1	PB4	40
T3_CH2	MOSI1 MOSI3	SD_D3	SCL1	PB5	41
T4_CH1		TX1	SDA1	PB6	42
T4_CH2	SD_D0	RX1	SCL1 (SDA3)	PB7	43
T4_CH3 T10_CH1	MOSI5 (F411)	SD_D4	SDA1 (SDA2)	PB8	45
T4_CH4 T11_CH1	NSS2	SD_D5		PB9	46

5V	5V				
GND (23)	GND (23)				
3V3 (24)	3V3 (24)				
21	PB10	SCL2	SD_D7	SCK2	T2_CH3
20	PB2	BOOT1			
19	PB1	ADC9		NSS5 (F411)	T1_CH3N T3_CH4
18	PB0	ADC8		SCK5 (F411)	T1_CH2N T3_CH3
17	PA7	ADC7		MOSI1	T1_CH1N T3_CH2
16	PA6	ADC6	SD CMD	MISO1	T1_BKIN T3_CH1
15	PA5	ADC5		SCK1	T2_CH1 T2_ET
14	PA4	ADC4	CK2	NSS1 NSS3	
13	PA3	ADC3	RX2		T2_CH4 T5_CH2 T9_CH4
12	PA2	ADC2	TX2		T2_CH3 T5_CH3 T9_CH1
11	PA1	ADC1	RTS2	MOSI4 (F411)	T2_CH2 T5_CH2
10	PA0	ADC0	CTS2	WKUP1	T2_CH1 T2_ET T5_CH1
7		NRST			
4	PC15				OSC32 OUT
3	PC14				OSC32 IN
2	PC13	LED BLUE			RTC AMP1 RTC_OUT RTC_TS
1	VBAT				

3V3	34	37	GND	29	MCO1
	PA13	PA14			
JTMS / SWDIO		JTCK / SWCLK			

Notes:
 TIM6 & 7 are only used by DAC and don't have any pins
 All pins are 5V tolerant on F401
 Pins 10 and 41 on F411 are 3.3V only.